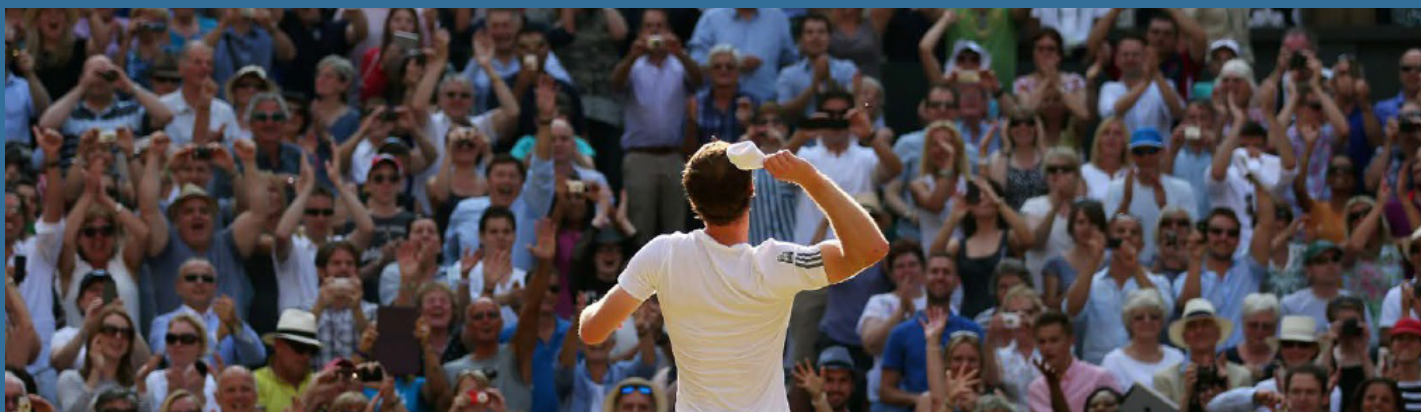


# WIMBLEDON 2017 CENTRE COURT PACKAGE



Soak up the unique Wimbledon atmosphere and watch the best of the action from the All England Club. With our packages you will get to see some of the biggest names in world tennis taking part in both singles and doubles matches on the All England Club's historic courts.

In 2017 we have ticket and accommodation packages where you will receive full VIP treatment in the exclusive Champions Lounge. This includes a 'Best of British' buffet lunch, complimentary drinks in the Champions Lounge, official Wimbledon merchandise, wireless internet access and a traditional afternoon tea with British strawberries and cream.



- Two days guaranteed tickets for Centre Court (consecutive days unless specified).
- Three nights' accommodation at any of the 3 star Premier Inn Putney Bridge, 4 star Kensington Hotel or the 5 star Corinthia Hotel, starting from the night before the first day of attendance at Wimbledon.
- Breakfast daily.
- Courtesy bus from Southfields Underground Station to/from Fairway Village on both days.
- Travel card for Zones 1- 4, for travel to/from Wimbledon on both days.
- All day access to the Champions Lounge with full hospitality, including buffet lunch, afternoon tea with strawberries and cream and complimentary drinks throughout the day including wine, beer, Pimms and soft drinks.
- Official Wimbledon merchandise and souvenir programme.
- Admittance to The Wimbledon Lawn Tennis Museum.

## Tour Cost - Price Per Person

TENNIS DATES	COURT	PREMIER INN		KENSINGTON HOTEL		CORINTHIA HOTEL	
DAY 1/2	DAYS 1 & 2	TWIN	SINGLE	TWIN	SINGLE	TWIN	SINGLE
Mon 3 July / Tue 4 July	Centre Court	\$7,090	\$7,650	\$7,530	\$8,430	\$8,570	\$10,890
Tue 4 July / Wed 5 July	Centre Court	\$6,360	\$6,890	\$6,780	\$7,690	\$7,790	\$10,130
Wed 5 July / Thu 6 July	Centre Court	\$7,250	\$7,780	\$7,670	\$8,590	\$8,690	\$10,990
Thu 6 July / Fri 7 July	Centre Court	\$7,890	\$8,430	\$8,290	\$9,240	\$9,340	\$11,670
Fri 7 July / Sat 8 July	Centre Court	\$7,760	\$8,290	\$8,180	\$9,090	\$10,220	\$12,550
Mon 10 July / Tue 11 July	Centre Court	\$7,380	\$7,890	\$7,790	\$8,730	\$8,830	\$11,160
Tue 11 July / Wed 12 July	Centre Court	\$9,430	\$9,970	\$9,850	\$10,790	\$10,880	\$13,190
Wed 12 July / Thu 13 July	Centre Court	\$9,960	\$10,490	\$10,370	\$11,290	\$11,390	\$13,730
Thu 13 July / Fri 14 July	Centre Court	\$11,990	\$12,560	\$12,440	\$13,380	\$13,470	\$15,790
Sat 15 July / Sun 16 July	Centre Court	\$14,290	\$14,850	\$14,760	\$15,690	\$15,790	\$18,090
Fri 14 July / Sun 16 July	Centre Court	\$19,390	\$19,960	\$19,990	\$20,890	\$21,470	\$23,790

EXTRA NIGHTS	TWIN	SINGLE
Premier Inn	\$230	\$430
Kensington Hotel	\$330	\$680
Corinthia Hotel	\$780	\$1650

### VIP UPGRADE - THE VILLAGE SUITE - \$590 per person nett

The Village Suite is the Fairway Village's fine dining restaurant. If you upgrade your package, you will be able to enjoy cocktails at the garden bar, before taking your seat at your own private table to enjoy a delicious à la carte lunch with free-flowing Champagne and entertainment throughout the day.

# WIMBLEDON 2017 SHOWCOURT PACKAGE



Soak up the unique Wimbledon atmosphere and watch the best of the action from the All England Club. With our packages you will get to see some of the biggest names in world tennis taking part in both singles and doubles matches on the All England Club's historic courts.

In 2017 we have ticket and accommodation packages where you will receive full VIP treatment in the exclusive Champions Lounge. This includes a 'Best of British' buffet lunch, complimentary drinks in the Champions Lounge, official Wimbledon merchandise, wireless internet access and a traditional afternoon tea with British strawberries and cream.



- Two days guaranteed tickets for Centre Court & Court No. 1 (consecutive days).
- Three nights' accommodation at any of the 3 star Premier Inn Putney Bridge, 4 star Kensington Hotel or the 5 star Corinthia Hotel, starting from the night before the first day of attendance at Wimbledon.
- Breakfast daily.
- Courtesy bus from Southfields Underground Station to/from Fairway Village on both days.
- Travel card for Zones 1- 4, for travel to/from Wimbledon on both days.
- All day access to the Champions Lounge with full hospitality, including buffet lunch, afternoon tea with strawberries and cream and complimentary drinks throughout the day including wine, beer, Pimms and soft drinks.
- Official Wimbledon merchandise and souvenir programme.
- Admittance to The Wimbledon Lawn Tennis Museum.

## Tour Cost - Price Per Person

TENNIS DATES	COURT	PREMIER INN		KENSINGTON HOTEL		CORINTHIA HOTEL	
DAY 1/2	DAYS 1 / 2	TWIN	SINGLE	TWIN	SINGLE	TWIN	SINGLE
Mon 3 July / Tue 4 July	Centre / No. 1	\$5,590	\$6,140	\$6,020	\$6,950	\$7,050	\$9,380
Mon 3 July / Tue 4 July	No. 1 / Centre	\$4,590	\$5,140	\$4,990	\$5,940	\$6,050	\$8,370
Wed 5 July / Thu 6 July	Centre / No. 1	\$5,070	\$5,590	\$5,480	\$6,390	\$6,540	\$8,860
Wed 5 July / Thu 6 July	No. 1 / Centre	\$5,460	\$5,990	\$5,870	\$6,790	\$6,890	\$9,230
Fri 7 July / Sat 8 July	Centre / No. 1	\$5,760	\$6,290	\$6,190	\$7,130	\$7,220	\$9,540
Fri 7 July / Sat 8 July	No. 1 / Centre	\$5,680	\$6,220	\$6,090	\$7,030	\$7,150	\$9,480
Mon 10 July / Tue 11 July	Centre / No. 1	\$6,270	\$6,790	\$6,690	\$7,640	\$7,730	\$10,050
Mon 10 July / Tue 11 July	No. 1 / Centre	\$4,780	\$5,290	\$5,190	\$6,130	\$8,370	\$10,690
Tue 11 July / Wed 12 July	Centre / No. 1	\$5,350	\$5,890	\$5,780	\$6,720	\$6,790	\$9,130
Wed 12 July / Thu 13 July	No. 1 / Centre	\$8,340	\$8,880	\$8,770	\$9,690	\$9,790	\$12,140

EXTRA NIGHTS	TWIN	SINGLE
Premier Inn	\$230	\$430
Kensington Hotel	\$330	\$680
Corinthia Hotel	\$780	\$1650

### VIP UPGRADE - THE VILLAGE SUITE - \$590 per person nett

The Village Suite is the Fairway Village's fine dining restaurant. If you upgrade your package, you will be able to enjoy cocktails at the garden bar, before taking your seat at your own private table to enjoy a delicious à la carte lunch with free-flowing Champagne and entertainment throughout the day.

# WIMBLEDON 2017 BASELINE PACKAGE



- Guaranteed ticket for Centre Court, Court No. 1 or Court No. 2.
- One Nights' accommodation at any of the 3 star Premier Inn Putney Bridge, 4 star Kensington Hotel or the 5 star Corinthia Hotel, sharing a twin/double bedded room with breakfast.
- Courtesy bus from Southfields Underground Station to/from Fairway Village on selected day(s).
- Travel card for Zones 1- 4, for travel to/from Wimbledon on selected day(s).
- Access to the Champions Lounge for ticket collection, morning tea, coffee and muffins.
- Admittance to The Wimbledon Lawn Tennis Museum.

## Tour Cost - Price Per Person

TENNIS DATES DAY	COURT COURT	PREMIER INN		KENSINGTON HOTEL		CORINTHIA HOTEL	
		TWIN	SINGLE	TWIN	SINGLE	TWIN	SINGLE
Mon 3 July	Centre	\$4,330	\$4,490	\$4,450	\$4,760	\$4,740	\$5,490
Mon 3 July	No. 1	\$1,770	\$1,950	\$1,920	\$2,230	\$2,320	\$3,090
Mon 3 July	No. 2	\$830	\$1,010	\$1,120	\$1,430	\$1,710	\$2,490
Tue 4 July	Centre	\$2,920	\$3,090	\$3,060	\$3,370	\$4,480	\$5,260
Tue 4 July	No. 1	\$1,690	\$1,880	\$1,830	\$2,150	\$2,240	\$3,020
Tue 4 July	No. 2	\$830	\$1,010	\$1,120	\$1,430	\$1,710	\$2,490
Wed 5 July	Centre	\$3,960	\$4,140	\$4,080	\$4,390	\$4,370	\$5,150
Wed 5 July	No. 1	\$1,760	\$1,940	\$1,890	\$2,220	\$2,330	\$3,090
Wed 5 July	No. 2	\$880	\$1,060	\$1,180	\$1,490	\$1,710	\$2,490
Thu 6 July	Centre	\$4,040	\$4,220	\$4,170	\$4,480	\$4,470	\$5,250
Thu 6 July	No. 1	\$1,760	\$1,940	\$1,890	\$2,220	\$2,330	\$3,090
Thu 6 July	No. 2	\$880	\$1,060	\$1,180	\$1,490	\$1,710	\$2,490
Fri 7 July	Centre	\$3,920	\$4,090	\$4,040	\$4,360	\$4,350	\$5,120
Fri 7 July	No. 1	\$2,150	\$2,330	\$2,290	\$2,620	\$2,710	\$3,490
Fri 7 July	No. 2	\$890	\$1,080	\$1,190	\$1,510	\$1,730	\$2,490
Sat 8 July	Centre	\$3,920	\$4,090	\$4,040	\$4,360	\$4,350	\$5,120
Sat 8 July	No. 1	\$1,810	\$1,990	\$1,950	\$2,260	\$2,350	\$3,120
Sat 8 July	No. 2	\$890	\$1,080	\$1,190	\$1,510	\$1,730	\$2,490
Mon 10 July	Centre	\$4,690	\$4,890	\$4,840	\$5,150	\$5,140	\$5,890
Mon 10 July	No. 1	\$2,280	\$2,460	\$2,430	\$2,740	\$2,840	\$3,590
Mon 10 July	No. 2	\$890	\$1,080	\$1,190	\$1,510	\$1,730	\$2,490
Tue 11 July	Centre	\$3,060	\$3,230	\$3,180	\$3,490	\$3,480	\$4,260
Tue 11 July	No. 1	\$1,750	\$1,930	\$1,890	\$2,190	\$2,290	\$3,080
Tue 11 July	No. 2	\$680	\$860	\$980	\$1,290	\$1,490	\$2,280
Wed 12 July	Centre	\$6,890	\$7,090	\$7,030	\$7,340	\$7,290	\$8,090
Wed 12 July	No. 1	\$2,920	\$3,090	\$3,060	\$3,370	\$3,470	\$4,250
Thu 13 July	Centre	\$3,560	\$3,750	\$3,640	\$3,960	\$3,890	\$4,680
Thu 13 July	No. 1	\$1,380	\$1,560	\$1,520	\$1,830	\$1,920	\$2,690
Fri 14 July	Centre	\$8,090	\$8,280	\$8,260	\$8,570	\$8,540	\$9,290
Sat 15 July	Centre	\$3,190	\$3,390	\$3,370	\$3,680	\$3,650	\$4,430
Sun 16 July	Centre	\$10,770	\$10,950	\$10,850	\$11,170	\$11,090	\$11,890

EXTRA NIGHTS	TWIN	SINGLE
Premier Inn	\$230	\$430
Kensington Hotel	\$330	\$680
Corinthia Hotel	\$780	\$1650

### VIP UPGRADE - THE VILLAGE SUITE - \$590 per person nett

The Village Suite is the Fairway Village's fine dining restaurant. If you upgrade your package, you will be able to enjoy cocktails at the garden bar, before taking your seat at your own private table to enjoy a delicious á la carte lunch with free-flowing Champagne and entertainment throughout the day.

### PAYMENT TERMS

A 50% non-refundable deposit is required to secure your booking. The final balance is due on Monday 13th March, 2017. All 2017 Wimbledon Packages are 100% non refundable & non transferable.